

Melbourne Convention and Exhibition Centre



**1 Convention Centre Place,
South Wharf, Victoria 3006**
Telephone: +61 3 9235 8210
Facsimile: +61 3 9235 8001
Internet: www.mcec.com.au
Contact: Abby Giese
Email: salesenquiries@mcec.com.au



The Melbourne Convention and Exhibition Centre (MCEC) is Australia's most versatile convention and exhibition facility with the flexibility to host a range of conferences and conventions; exhibitions; meetings and seminars; and gala and special events.

Melbourne Convention Centre

As the first, and only, '6 Star Green Star' convention centre in the world, the convention centre represents world leadership in best practice, innovation and sustainability and is raising standards to new heights in technology, imaginative catering and service options.

With a stunning 18-metre tall glass façade fronting the Yarra River offering unequalled views of the Melbourne city skyline, the centre offers an unparalleled experience for delegates and visitors alike.

Thirty-two meeting rooms of various sizes, a grand banquet room, an entry level foyer and a state-of-the-art plenary that can be divided into three self-contained, acoustically separate theatres, offer unlimited options in event planning.

Technology

The most sophisticated audio visual, communications and information technology available has been installed into every meeting room of the convention centre.

Easy to use and highly intuitive, the 'intelligent lectern' controls the room's lighting, sound, and data projection.

Food and Wine

The MCEC believes that food and wine are fundamental to the success of any event and we promise to deliver a fresh perspective on food and wine for all delegates.

We source the best seasonal ingredients from local suppliers, tailor a menu that meets the client's needs and ensure a flexible, caring approach for each and every event, regardless of size.

Melbourne Exhibition Centre

Sitting alongside and internally linked to the convention centre is the Melbourne Exhibition Centre featuring a variety of rooms and spaces.

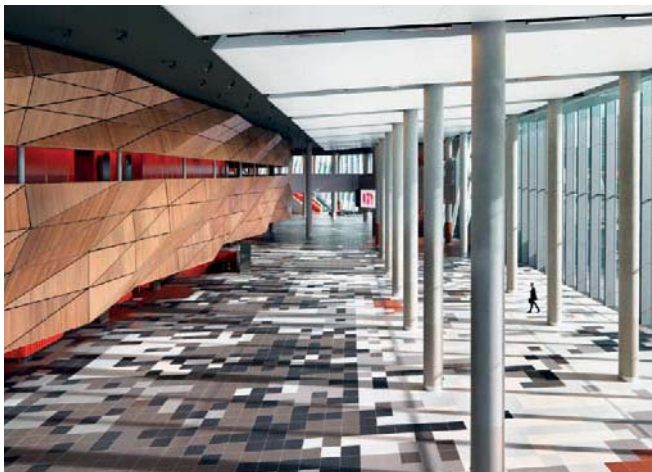
The exhibition centre offers an unrivalled 30,000 square metres of air-conditioned, clear span floor space – the largest in the Southern Hemisphere – providing flexibility for all large scale events.

The exhibition centre also features organisers' offices, hospitality suites, a 466-seat auditorium, meeting rooms and the Clarendon Room, with stunning views over the Yarra River and the Melbourne central business district.

Location

The MCEC is superbly located on the banks of the Yarra River in inner-city South Wharf – Melbourne's newest destination for fashion, food and lifestyle experiences.

At the MCEC's doorstep are walking paths and footbridges, providing easy access to some of Melbourne's best known landmarks.



Images (top to bottom)
Melbourne Convention Centre foyer
Plenary
The Melbourne Convention and Exhibition Centre

Melbourne Convention and Exhibition Centre



Melbourne Convention Centre

Please note there are many combinations of the Plenary and the meeting rooms. Please contact the MCEC for further information.

Room	Sq(m)	Level	Theatre	Classroom	Cocktail	Banquet	Boardroom
Plenary 1,2 & 3	-	-	5541	-	-	-	-
Plenary 1	-	-	1505	-	-	-	-
Plenary 2	-	-	2567	-	-	-	-
Plenary 3	-	-	1507	-	-	-	-
Level 1 meeting rooms							
Small 101, 102, 111, 112	-	1	60	27	56	30	18
Small 101 & 102 combined	-	1	155	72	112	80	-
Small 111 & 112 combined	-	1	155	80	100	72	-
Small cantilevered 107, 108	-	1	72	27	56	30	20
Medium 103, 104	-	1	130	63	108	60	-
Large 105, 106	-	1	256	96	180	120	42
Large 109 & 110 combined	-	1	480	216	376	280	-
Level 2 meeting rooms							
Small cantilevered 205, 206	-	2	55	24	50	30	20
Small cantilevered 214, 215	-	2	60	24	42	30	20
Banquet 201, 202	-	2	1188	456	830	720	-
Banquet 201 & 202 combined	-	2	2304	912	1660	1500	-
Medium 207, 208, 209, 216, 217, 218	-	2	120	63	80	60	30
Large 210, 211, 212, 213, 219, 220	-	2	240	84	160	120	42
Large 203, 204	-	2	240	96	160	120	42
Large 203 & 204 combined	-	2	480	198	320	280	-
Large 210 & 211 combined	-	2	480	198	320	280	-
Large 212 & 213 combined	-	2	480	198	320	280	-
Large 219 & 220 combined	-	2	480	198	320	280	-

Melbourne Exhibition Centre

Room	Sq(m)	Level	Theatre	Classroom	Cocktail	Banquet	Boardroom
Exhibition bays	30000	-	-	-	-	-	-
Auditorium	-	2	466	-	-	-	-
Meeting room 1	-	2	60	24	60	40	18
Meeting room 2	-	2	90	45	80	60	27
Meeting room 3	-	2	80	30	70	50	30
Meeting room 2 & 3	-	2	130	50	160	120	-
Meeting room 4	-	2	36	15	35	20	18
Hospitality Suite 1-5 (each)	-	2	120	60	80	60	40
Suite 1	-	5	100	26	130	80	28
Suite 2	-	5	100	26	130	80	28
Suite 1 & 2	-	5	130	60	230	140	-
Clarendon Room	-	5	-	-	100	80	-
Large 212 & 213 combined	-	2	480	198	320	280	-
Large 219 & 220 combined	-	2	480	198	320	280	-

Images (top to bottom)
 Small cantilevered meeting room
 Grand Banquet Room
 Medium meeting room